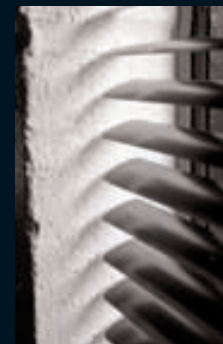
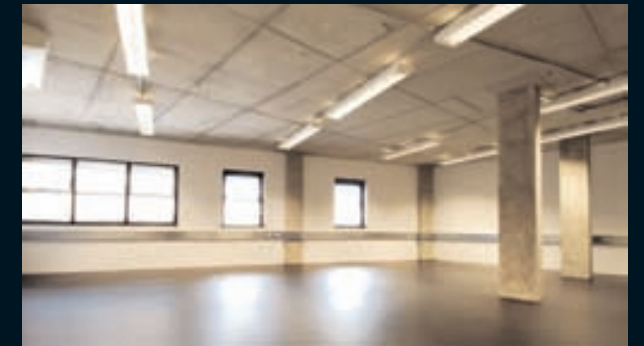




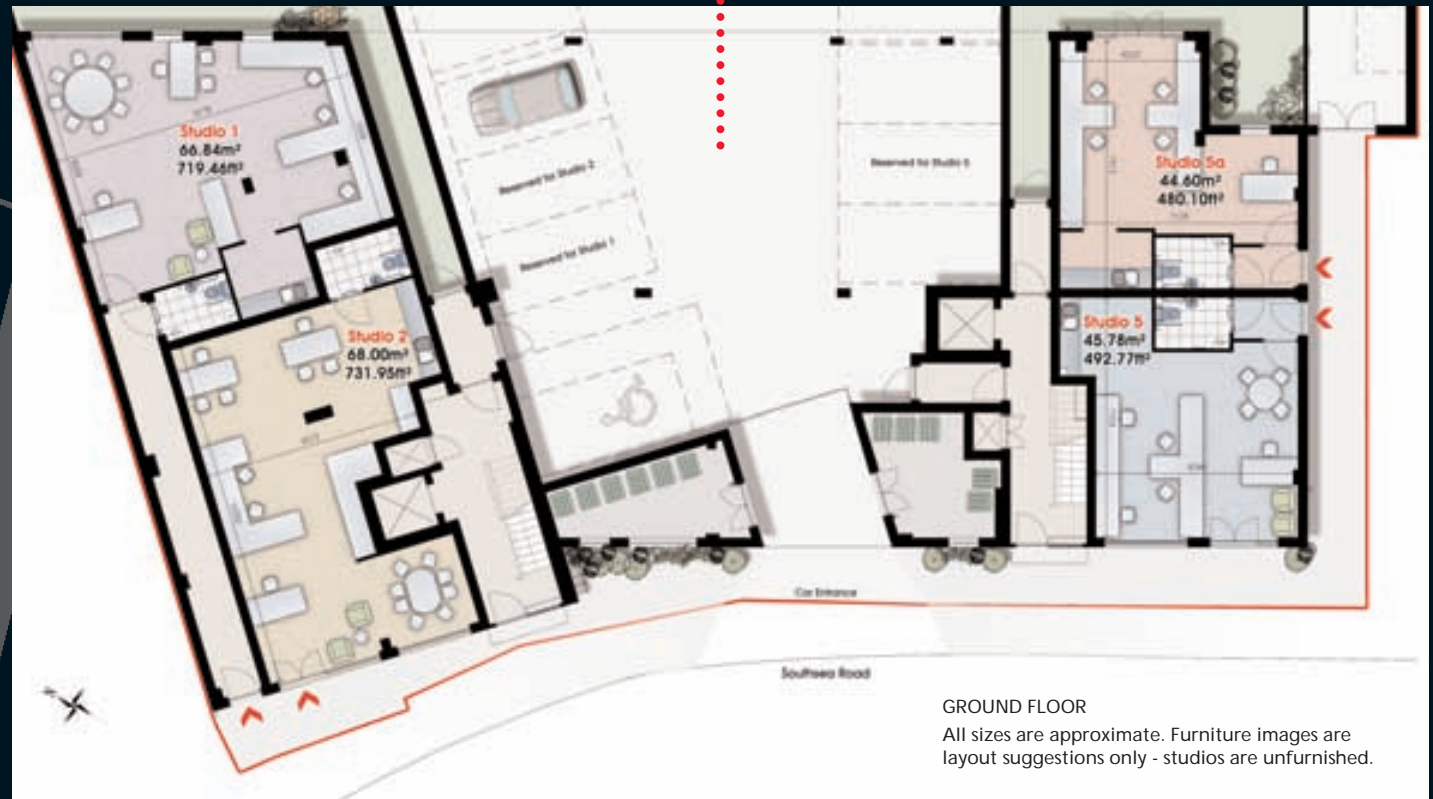
# Southsea Studio Offices

Contemporary work spaces in Kingston –  
perfectly formed for the small business

# FiL



[kingstonoffices.com](http://kingstonoffices.com)



**GROUND FLOOR**

All sizes are approximate. Furniture images are layout suggestions only - studios are unfurnished.

## Southsea Studios, 1-5 Southsea Road, Kingston upon Thames, Surrey KT1 2EH

### Premium quality development of four ground floor studio offices

Located in a quiet area, adjacent to Kingston University, Kingston Riverside near by.

Kingston and Surbiton (Waterloo in 20 minutes) train stations within 15-20 minute walk.

Interior designed to provide light and airy work spaces with flexible layouts, specifications include:

- internet-ready CAT 5 cabling
- stylish and hardwearing epoxy resin flooring
- air conditioning
- private entrances
- high quality fitted kitchenettes

Available on new, full repairing and insuring leases. All measurements, areas and distances are approximate.

Studio 1	66.84 m <sup>2</sup>	1 parking space
Studio 2	68 m <sup>2</sup>	1 parking space
Studio 5	45.78 m <sup>2</sup>	1 parking space
Studio 5a	44.60 m <sup>2</sup>	

For more information visit [kingstonoffices.com](http://kingstonoffices.com) or contact Bonsor Penningtons 020 8546 0022 [property@bonsorpenningtons.co.uk](mailto:property@bonsorpenningtons.co.uk)

Kingston Offices is an FiLGROUP development: FiLGROUP Ltd, KOPSHOP, 6 Old London Road, Kingston KT2 6QF [filgroup.co.uk](http://filgroup.co.uk) [kopshop.net](http://kopshop.net)

